

## K.I. Kampen news April 2024

Good news from K.I. Kampen! The April proofs showed again that a logic way of selecting bulls brings money to the farmer. It starts with a cowfamily. The best animals out of that cowfamily must be mated with the best bull. Once the bull calf is born, it has to look like a balanced animal. As finishing touch the genomics test has to show the traits of the bullcalf are what the farmer is looking for. Not everything can be seen by just looking at a calf. The more K.I. Kampen take into consideration, the higher the chance you get daughterproven bulls that bring money for you. And that is what K.I. Kampen are going for.

### April index: variety to make sure you have a choice!

The new proofrun got some great news for K.I. Kampen customers. Variation is the base of breeding. Only variation gives you the choice to really pick what your cows need. K.I. Kampen will keep on working on variation within all the breeds they represent.

### Black and white Holstein news

[VDR Shakespeare](#) (Ranger x Malki, aAa 5136) has a very nice plus in his index. He is a bull that gives daughters with high components with very good type. Especially feet and legs are very good. Also on most management traits his daughters are doing well. Hoofhealth and udder health remain great. We can not wait to see how the oldest daughters develop in their second lactation. Shakespeare is suitable for heifers and sexed available.



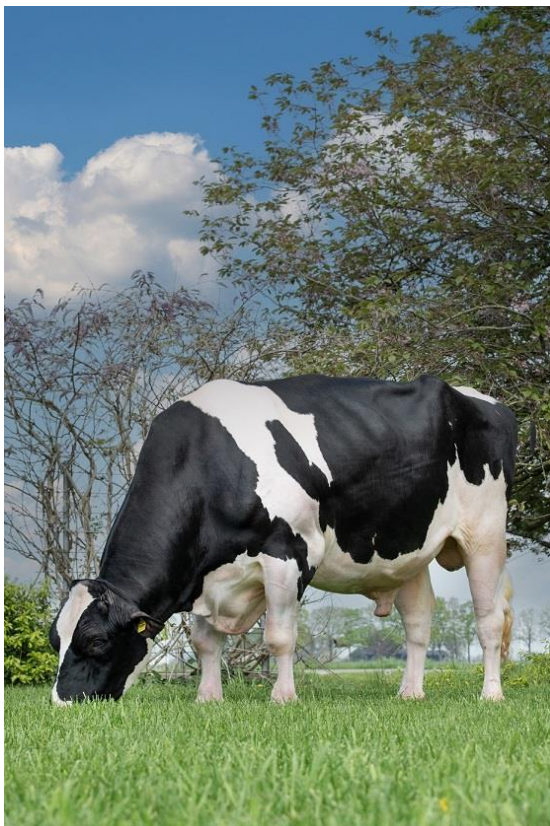
*Hendrika 740 is a typical Shakeseparedaughter with super feet and legs and a great udder.*

[Weinterper Solution](#) (Finder x Guard, aAa 234, A2A2) impresses with his [thirdcalver](#) daughters. They get better every lactation. His index is getting better every proofrun too. Production, type and management traits are all of very high level. This year the heifers of his daughterproven period will start to calf in. Farmers and K.I. Kampen are very much looking forward to see how they will make money for the dairyfarmers. Solution is sexed available.



*Weinterper Solution not only is impressive himself, his daughters perform super too.*

[Koepon Random](#) (Ranger x Board, aAa 234, A2A2) is losing a little bit on total index, but he remains number 1 type daughter proven in the Netherlands. His production is amongst the highest level and many other traits make him very interesting. Feet and legs are exceptional. Random is Blird carrier, it is important to keep that in mind while making the mating. Random is sexed available.



*Koepon Random his milk index is down a little bit, but he remains very popular with 1606 daughters in his production index.*



In the black and white genomics two bulls are getting more and more attractive: [Double W Magic P](#) (Amuse x Deliver, aAa 534, A2A2) is the top of the polled Holstein. And he is very outcross for polled as his sire and maternal grandsire were horned. [VDR Steven Tyler](#) (Gigaliner x Bandares, aAa 435, A2A2) comes from a cowfamily that delivers in bulls and cows. Steven Tyler is very high in type. Both bulls combine very high production with very high longevity. Steven Tyler is sexed available.



*Double W Magic P has a super index and is very outcross in the polled segment.*

#### **Red and White Holstein news**

In Red and White daughter proven, two new topbulls came through. [Timmer Torrox](#) (Jacuzzi x Finder, aAa 234) is the new champion in kilos fat and protein. Torroxdaughters are easy to manage. Milking speed is point of attention, but his daughters improve his genomics proof on this trait. Torrox is sexed available. [Barendonk Go Now](#) (Goal Red x Fun P, aAa 5346) is the second newcomer. His daughters have a good production and good daughter fertility. His daughters are not very tall but very balanced.



*Torroxdaughter Schreur Lomee 15 is producing very well.*

The popular Red and White daughter proven bulls do a great job with a plus in their index now more daughters get in their proof. [De Broekhof Tolean](#) (Anreli Red x Danno, aAa 315, A2A2) is increasing his position as allrounder with slightly longer teats. Tolean is haven a very high EBI of 282 with positive components. Tolean is suitable for heifers and sexed available. [Groenibo Reliever](#) (Anreli Red x Jetset, aAa 513, A2A2) was new in December. Reliever is distinguishing himself more and more as components specialist for robust daughters. His daughters perform without attention and farmers who are milking his daughters are ordering semen again. Reliever is suitable for heifers and sexed available.



*Groenibo Reliever is making farmers very happy. His second index based on daughters shows a very nice plus.*

Last but not least in daughterproven: our legend [Caps Angelo](#) (Riverboy x Fageno, aAa 342, A2A2) increased again. His eldest daughters finished their first lactation and that is impressive. Impressive to farmers, impressive to K.I. Kampen and also impressive in the index. Although he is a little older now his index is getting better all the time. His production index is based on 1430 daughters. The demand for Angelo will remain high.



*The daughters of Caps Angelo at the K.I. Kampen Open Days in 2022 were very impressive. His index is getting better every proof run.*

In Red and White genomics, [Wilskracht Worldcup](#) (Taskforce P x Jaffa P, aAa 243, A2A2) and [Wilskracht Wahoo P](#) (Cartoon P x Jaffa P, aAa 342) are very interesting. Bulls with very high components and super type. Both will give healthy and fertile daughters. Worldcup is sexed available.



*Worldcup en Wahoo P come from the Warsi/Warsau family. Their maternal granddam is Wilskracht Warsi 879 (A93). A cow that combines super production and super type.*

### Dairy beef update

The April proof gave new information on our dairy beef bulls. Traditionally K.I. Kampen are very strong in the easy calving white blue bulls. What K.I. Kampen select for:

- The highest semen fertility
- An easy born calf
- Calves with blue hair
- Calves that drink quickly
- If possible, calves that keep on growing

The results of this selection in the April proof are:

Name	Pedigree	CE	GL	Birth Weigth	Semen Fertility	Remarks
<a href="#">Stoevelaar 3</a>	Three different bulls	137, 134, 132	95, 92, 97	67, 71, 72	Good	Super easy calving mix of Berend, Jord and Frits
<a href="#">Stoevelaar Frits*</a>	Urbanus 3 x Adamo	134	92	71	+5	Super semen fertility, super calves
<a href="#">Stoevelaar Jord</a>	Dino x Adamo	132	97	72		Happy farmers, very active calves.
<a href="#">Fried vd Simonshoek</a>	Noud x Nisir	130	88	72	-1	Very popular short gestation bull
<a href="#">Wiljan vd Simonshoek</a>	Dorus x Nisir	128	96	75		Maternal half brother to Fried. Middle segment
<a href="#">Stoevelaar Surprise</a>	Adamo x Remco	126	95	78		The bull for calves with added value.



<a href="#">Urbanus 4</a>	Turbo x Bruegel	114	94	86		Heavier calves. To really start with kilos.
<a href="#">Stoevelaar Willem</a>	Fructuex d'Ozo x Barack					Testbull bred for short gestation and easy calving

\*Stoevelaar Frits is male sexed available.



*Stoevelaar Frits has +5 semen fertility and gives super calves.*

The short summary of this index:

- The Stoevelaar 3 mix still is the best mix for easy calving and semen fertility worldwide
- Stoevelaar Frits increases calving ease
- Stoevelaar Frits increases semen fertility
- Fried shortens gestation length
- Stoevelaar Surprise increase calving ease with still high value calves



*Stoevelaar Surprise is average in calving ease. His calves are making kilos quick and easy.*

The demand for Aberdeen Angus is increasing. Calves are born quicker than BB. Calves sometimes have added value where Angus beef is marketed. K.I. Kampen are having top of the breed for Angus too.

Name	Pedigree	CE	GL	Birth Weigth	Semen Fertility	Remarks
------	----------	----	----	--------------	-----------------	---------

<a href="#">De Crob Conviction</a>	Conviction x Brave	157	95	46		Calving figures based on Dutch calves. Super index in Ireland
<a href="#">Drumcrow Savoy</a>	Jeremy x Mark	Licht			Top	Very good and easy born calves in Ireland



*De Crob Conviction is getting more and more popular all over the world.*

### **Other dairybreeds convince with daughters!**

K.I. Kampen want to have the right bull for all farmers. In all breeds, K.I. Kampen start with selecting from good cowfamilies. That remains a very successful start of selecting. The April proof was very good for the other dairy breeds at K.I. Kampen.

In the April proof K.I. Kampen had the highest new daughter proven MRI bull. He has a fantastic pedigree with good type and great production. The components and life span production are impressive for MRI. The semen of De Vinkenhof [Powerboy](#) (Sören x Baltimore, aAa 516) is extremely fertile. And now his daughters are giving his proof a very great boost. They are distinguishing in production, type and milking speed.



*De Vinkenhof Powerboy is very popular for his semen fertility. His first daughters are very promising. Pictures is his dam Lifespan production: 79.0001 kgm with 5.24% fat and 4.03 % protein.*



K.I. Kampen are famous for its Friesian lines up. The Friesian is appreciated for its daughter fertility, components and body condition. [Bernard 28](#) (Tarzan 8 x Bernard 25, aAa 432) and [Dalino](#) (Bernard 26 x Thierry, aAa 432, A2A2) are still the number 1 and number 2 in the Netherlands. Bernard 28 gives daughters that produce easily. Dalino distinguishes himself with high components en being A2A2. [Bloemplaathoeve Ewoud](#) is the number 1 Friesian in the UK again with a PLI of 318. All these three Friesians are suitable for heifers.

The first daughter of [Siem](#) (Lemonhead x Jang, aAa 426, A2A2) show what can be expected from a good Jersey bull. High components, super daughter fertility, rock hard feet and legs. He is suitable for heifers and sexed available.



Siem comes from a great late maturing cowfamily Here is his dam winning a local show. She produced 53.544 kg with 5.92% fat and 4.29% protein. His daughters seem to develop very well.

### **K.I. Kampen are going forward!**

Dutch dairy farmers are struggling due to low milkprices, higher interest rates and very difficult regulations from the government. K.I. Kampen are nicely growing. Why? Because K.I. Kampen try to think as a farmer. We are constanly developing the best product with the best semen fertility. And that is what comes back. Good fertility results, commercial milking cows and a very nice easy calving dairy beef lines up. We keep on doing this to make sure farmers all over the world can make money and supply great dairy and beef products!

Do you want more information on the K.I. Kampen product? Please contact Reurt Boelema:

E-mail: [rboelema@ki-kampen.nl](mailto:rboelema@ki-kampen.nl) phone/whatsapp: +31682464819

[www.ki-kampen.com](http://www.ki-kampen.com)